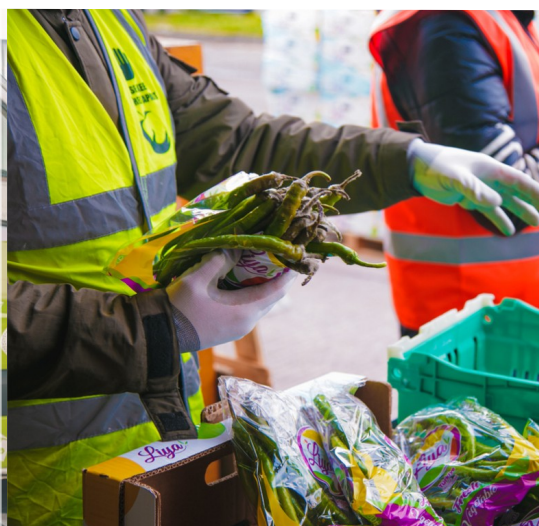




Membership Factsheet

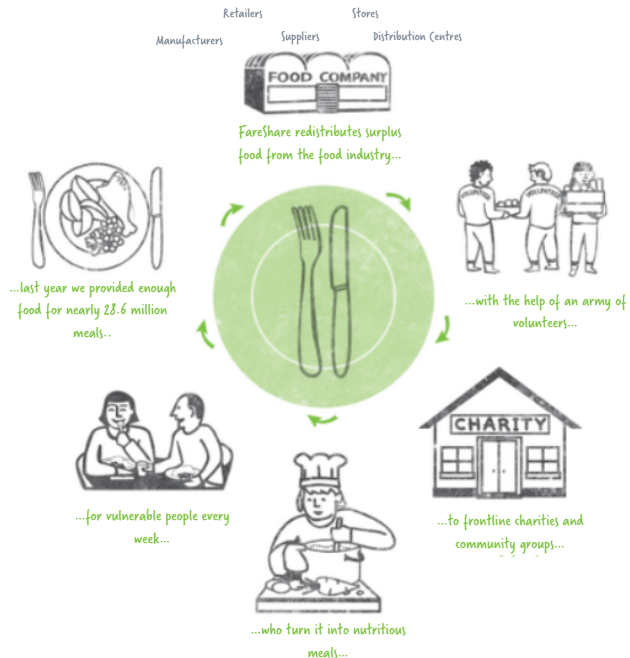
The food we save is varied, including sources of meat and dairy, fruit and veg, and cupboard staples such as cereal. We offer good quality and in-date food that could help you provide a healthy varied menu for the people you support.



What we do

FareShare is the UK's largest charity fighting hunger and food waste. We redistribute good food that would otherwise go to waste to frontline charities and community groups supporting vulnerable people.

There are currently 21 FareShare Regional Centres operating across the UK. We at FareShare Greater Manchester are based on New Smithfield Market in Openshaw. We redistribute surplus food to over 140 charities and community organisations in the region, from lunch clubs in Oldham to homeless charities in Wigan!



Good food for your service users

FareShare works with national, regional and local food growers, manufacturers and retailers, accessing quality surplus food for redistribution.

Food becomes surplus for a myriad of reasons from packaging errors to short date coding or cosmetic imperfections. But all the food we provide is **within its use-by or best before date** and we follow stringent policies and procedures for storage and transportation to meet all **food safety legislation**.

The types of food received by our charity members can vary from week to week. We appreciate that this is a challenge, inherent with working with surplus, but it can also be a bonus, sometimes offering unexpected treats as well as good old staples.



Benefits to your organisation

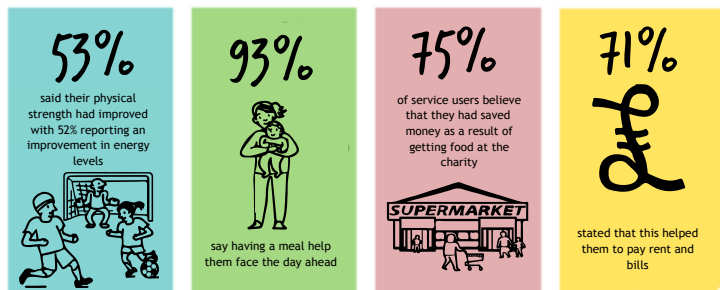
There are many benefits of becoming a FareShare charity member including:

- Access to a wide range of quality food.
- Reduction in your food spending. For a small fee, our charity members have access to several thousands of pounds worth of food.
- Increased ability to support people beyond the provision of food, as outlined below.

What our charity members have told us:



What the people who use the services have told us:



How does it work?

If your organisation or project supports vulnerable people in your community and you are either a charity, a not-for-profit organisation, a community group or a social enterprise providing a meal service, please get in touch with us.

In order to become a FareShare charity member, we would ask you to complete an application form following which we will visit your project to discuss food hygiene and safety processes as well as your food requirements. It's not a complicated process and our team can provide advice and help on food safety.

To start the process, [register your interest now.](#)



[Register your interest](#)

Community Food Membership

FareShare is a non-profit charity and to remain sustainable, our Regional Centres charge charity members a nominal fee to cover operational costs, which include warehouse space, chillers, delivery vehicles and fuel. The fee for FareShare Greater Manchester members is 30p per kg (collected from our depot), or 40p per kg (delivered to your door).



Collection from FareShare Greater Manchester

You collect the food yourself from our warehouse in Openshaw. If you receive chilled food, you must bring a chill box to transport the food.



30p per Kg



Delivery to your premises

We deliver to your project using our FareShare vans. You then check and accept the order.



40p per Kg

What your membership includes:

- ✓ Supply of quality food
- ✓ Creation of your food profile and needs
- ✓ Advice and guidance regarding food safety best practice from trained staff
- ✓ Access to additional non-food items when they become available
- ✓ Volunteering opportunities
- ✓ Reporting on volumes and types of food received, for your monitoring purposes

Join our Network

Still not sure? Read what some of our charity members are saying:



“

our partnership with FareShare Greater Manchester has enabled us to massively expand our community outreach at a time when it has never been more needed.

Vinny Thompson, Project Leader at the FC United Food Hub

“

over the past few months we have received a combined weight of almost one tonne of food from FareShare Greater Manchester. Without this we would be unable to support our community in the way that we have.

Carl Roach, Pantry Project Manager, Lighthouse Pantry

“

our partnership with FareShare enabled us to become a different kind of community hub, so instead of families and kids coming to us, we're going out to them. We were able to deliver high quality food from supermarkets and wholesalers straight to families' doors.

Iain Linsdell, Headteacher, Poplar Street Primary School

We get brilliant feedback from our members about the food. What people really love about what we receive from FareShare is the variety.

Elena Vacca, Community Food Officer, Your Pantry

Get in Touch

If you are interested in receiving good food,
please contact our team:

Email: membership@emergemanchester.co.uk

Tel: 0161 223 8200 (option 4)

or register your interest online using our form.



www.faresharegm.org.uk



@FareShareGM



@FareShareGM



/FareshareGreaterManchester